

INFO & OPPORTUNITIES

VOLUME 4 ISSUE 1

SEPTEMBER 2007

National Institute for Literacy Survey

Have you ever wished you could have some input into decisions that are being made nationally on professional development opportunities? If so, here is your chance to express your opinion and share your thoughts.

The National Institute for Literacy is conducting a survey on the professional development needs of adult education practitioners across the country. We need your help to gather information that reflects your own needs in the area of professional development as well as how you think professional development should be offered. We are asking for only 10-15 minutes of your time.

Follow this link to take the survey at <http://www.nifl.gov/lincs/needssurvey/>.

Information collected from the professional development needs survey will be used by the Institute and the LINCS Regional Resource Centers to

- (1) give us insights on how Institute-produced materials and training can be disseminated and
- (2) identify areas where the Institute might want to develop additional materials and trainings. The Regional Resource Centers will use the data to develop a regional dissemination plan that will include how to best disseminate and present Institute-sponsored resources and training in partnership with the state organizations. You can take the survey until Nov 9, 2007.

The National Institute for Literacy, a federal agency, provides leadership on literacy issues, including the improvement of reading instruction for children, youth, and adults. In consultation with the U.S. Departments of Education, Labor, and Health and Human Services, the Institute serves as a national resource on current, comprehensive literacy research, practice, and policy.

The National Institute for Literacy is committed to the dissemination of high-quality resources to help practitioners use evidence-based instructional practices that improve outcomes in adult learners' literacy skills. LINCS is the backbone of the Institute's dissemination system, providing information on a wide variety of literacy relevant topics, issues, and resources through regional resource centers, collections of resources, and discussion lists. For more information about the National Institute for Literacy and LINCS visit <http://www.nifl.gov>.

STAFF DEVELOPMENT & TRAINING

Sept 19: ESL Pre-Service Part 1

Sept 20: Reading Instruction for Adults: 1st Steps for Teachers

Sept 25: Distance Learning Program Manager's Guide, (Web-based conference)

Sept 26: Crossroads Café Certification

Sept 27: NYS Adult Learning Standards (Blue Box)

Sept 28: The New Teacher of Adults (Pre-Service for Adult Educators)

Oct 2: TABE Administrators Certification

Oct 4: GED Day Camp

Oct 5: Developing Customized GED Lesson Plans

Oct 11: GED Examiner Training

Oct 12: Strategies for Experienced Educators

Oct 19: GRASP Certification for NEW GRASP Teachers

Oct 22: TABE Administrators Certification

Oct 24: Techniques to Create Successful Employees

Nov. 8: NYATEP Workforce Regional Meeting

Nov 16: Addictive Thinking

At Your Convenience:
NRS Online

At Your Convenience:
Reporting Child Abuse Certification (Online)

Adult Education and Post-Secondary Success

The National Commission on Adult Literacy recently released ADULT EDUCATION AND POSTSECONDARY SUCCESS by Steve Reder of Portland State University and the National Center for the Study of Adult Learning and Literacy. The policy brief was presented at the Commission's third meeting on August 20, 2007. It examines GED holders in comparison to their counterparts who have received a high school diploma as well as those with no high school credential. The comparisons are made in terms of long-term postsecondary education outcomes. The author makes numerous recommendations for expanding and restructuring the adult education system, with the goal of college readiness and success in mind. [September 4, 2007, 29 pages, publ. Council for Advancement of Adult Literacy] This document and others that have been released are available from the Publications page of the National Commission website: <http://www.nationalcommissiononadulthoodliteracy.org/pandp.html>.

Over the next 2-3 weeks, three additional documents will be released: a policy brief by Julie Strawn of the Center for Law and Social Policy (Policies to Promote Adult Education and Postsecondary Alignment); a policy brief by education consultant James Parker (Workplace Education: Twenty State Perspectives); and a special perspectives paper developed by Tony Peyton of the National Center for Family Literacy (Family Literacy in Adult Education: The Federal and State Support Role).

Health Literacy Initiatives

In a report submitted to the NYSED Board of Regents, it was determined that families play a critical role in ensuring that children are healthy. Many of the children struggling to succeed in school come from families where parents lack the English language, literacy and navigation skills needed to obtain health insurance, access health care, or manage illness and disease for themselves and for their children. Health literacy is important for ensuring P-16 success. It supports a strong workforce, being directly correlated with productivity and success on-the-job.

The 2003 National Assessment of Health Literacy of America's Adults shows that 14 percent of people, 16 years of age and older have very limited health literacy. Another 22 percent have only a basic proficiency, and do not have the skills to effectively navigate the health care system. An estimated 10 percent of young adults between the ages of 16 and 49 are below basic proficiency; another 20 percent fall at the basic level. Most at risk are high school drop-outs, those in poverty, immigrants and limited English speaking adults, Black and Hispanic Americans, adults with one or more disabilities, and the elderly. The Joint Commission, which accredits nearly 15,000 U.S. health care organizations and programs, along with the Centers for Disease Control and Prevention and U.S. Health and Human Services, has identified health literacy as a national concern that must be addressed.

New York State's education system, working closely with the health care system and state agency partners, is positioned to be on the cutting edge of health literacy. Adult literacy programs across the State have piloted effective approaches for delivering health literacy skills to New Yorkers to ensure that: families who are eligible for health insurance obtain coverage; that parents and young adults gain the skills needed to navigate the health care system; that they obtain health care without relying on costly emergency room visits to address family health problems; that they gain the skills to effec-

Health Literacy Initiatives (continued)

tively and fully connect this initiative with P-16, health and mental health initiatives.

SED's Office of Adult Education and Workforce Development is developing a statewide strategy for expanding health literacy to reach New Yorkers with limited literacy or English language skills. To that end, NYSED is requesting the following information from Adult Education providers:

1. Please provide a short description of the health literacy improvement project at your organization.
2. What is the health literacy problem your organization is trying to address?
3. What is/are the one or two most unique aspects of this project?
4. What is/are the one or two most significant accomplishments to date?
5. What is the definition of success for your organization's project?
6. What barriers/challenges MUST still be addressed for your project to be most successful?

Please submit this information by email to Ann Marie Przybyl (amprzybyl@aol.com) by Oct 26.

October is New York Archives Month

Archives Month was created to help promote the use of the many rich collections available in historical records repositories throughout New York State. Originally started as Archives Week in the late 1980's and usually held during the second week of October, it has grown in stature over the years. This year, with numerous organizations promoting so many events, the decision was made to declare October to be Archives Month in New York State. For a list of commemorative events held throughout the month around the state, go to <http://calendar.nysed.gov/cgi-bin/Calendar.pl?CalendarName=NYS&Date=2007%2F10%2F1>.

Primary source materials can be easily integrated into every Adult Ed curriculum; creating an exciting classroom environment, providing motivation for learning, easily addressing a variety of learning styles, and sharpening student's critical thinking skills. Imagine your Civics students actually signing the Declaration of Independence themselves, your literacy students reading and analyzing historical documents about their own community, your GED students using photographs, maps, films and audio recordings to prepare for the science or social sections of the exam. The National Archives provides resources about primary sources, activities and training for educators and students; find them at: <http://www.archives.gov/education/>. The Library of Congress is another excellent source of materials for Educators: <http://www.loc.gov/teachers/>.

The Alabama Department of Archives and History sponsors a website titled "Using Primary Sources in the Classroom". Each unit contains background information for the teacher and is made up of several lessons. The lessons contain learning objectives, suggested activities, and documents. Documents are reproduced in the original form and transcribed when necessary. Primary source materials may be printed and reproduced for classroom use. Lessons can be used without modification, adapted for specific class use, or entire new lessons and activities may be created based on the primary source materials provided. <http://www.archives.state.al.us/teacher/psources.shtml>

Resource Server



► You will find the very latest news about the National Commission on Adult Literacy, its mission, the full list of commissioners, all publications released to date, and upcoming events at its website:

www.nationalcommissiononadulthoodliteracy.org. As part of the launch, the Commission is publicly releasing a DVD presentation made to the Commission on April 17th. It is a 17-minute talk about major findings of the New Commission on Skills of the American Workforce by Marc Tucker, study director of the new Commission and president of the National Center for Education and the Economy. It is the first entry in the list of resources on the Publications Page and can be viewed online.

► Spanish early literacy parent-child activity materials , available from the USDOE. have recently been updated. The updates include more colloquial Spanish, and other editing. In addition, early math materials and other downloads are expected to be posted this Fall. The development of these materials was supported by Grant H324M020084 from the U.S. Department of Education , Office of Special Education Programs

These materials include forty-six home and community activities for adults and preschool children that encourage early language and literacy development in young children. They are appropriate for children with disabilities as well as children who are developing typically. Each of the forty-six activities includes 1) An activity description, 2) Hints for making the activity fun and developmentally appropriate, and 3) A brief self-evaluation form that cues parents and other caregivers to notice their children's skills, and also cue adults to examine and grow their own interactions with their children. The materials may be copied and distributed as long as they are not sold.

To download materials go to **www.wlearning.com** and click on the purple button that says "Free Parent Education Handouts" on the home page.

► Find out what's going on with the National Institute for Literacy's Discussion Lists. Check out upcoming events at:

http://www.nifl.gov/lincs/discussions/list_events.html

The online discussion lists give thousands of literacy stakeholders opportunities to discuss the literacy field's critical issues; share resources, experiences, and ideas; ask questions of subject experts; and keep up-to-date on literacy issues.

► Project Magazine is an online site that has some useful articles on managing projects. Just go to **www.projectmagazine.com**. You can read the current issue or browse their archives on topics like time management, personal finance, teambuilding and many, many more. You'll also find book reviews, advice on project management software and recommended links to other project management resources

Conferences

[PAACE Midwinter Conference on Adult Education](#) **February 6—8, 2008** **Hershey, PA**



The 43rd Annual PAACE Midwinter Conference on Adult Education, the largest gathering of adult educators in Pennsylvania, will be held at the Hershey Lodge, February 6-8, 2008. The theme, "Opening Windows", will provide a focal point for exploring educational opportunities for all types of adult students, more efficient delivery systems, transition to postsecondary education and training, new research, professional development, workforce development, public policy supporting adult education, and an optimistic eye to the future.

<http://www.paacesite.org/web-data/Diagrams/PAACE%20Site/conference.html>

[Window into the Deaf World](#) **October 16, 2007** **Salvatores Italian Gardens, Buffalo, NY**

This symposium discusses providing services to the Deaf, Hard of Hearing and Non-Verbal Communities. Featured topics will include: Improving Employment Outcomes within the Deaf Community, Transition and Success After High School, Technology and Legal Rights, Mental Health: Accessing Effective Services.

Location: Salvatore's Italian Gardens, 6461 Transit Road, Depew NY 14043, (716) 683-7990

Time: Registration and Continental Breakfast 8:30 a.m., Symposium 9:00 a.m. – 4:00 p.m.

Register by October 1, 2007.

Cost: \$25 per person. A continental breakfast and lunch are included. Make check payable to: Aspire of WNY. Mail check to: Michele Halbert at 2495 Main Street, Suite 417, Buffalo, NY 14214.

[LERN Annual Conference](#) **November 15—17, 2007** **Orlando, Florida**

The content is geared to those in a variety of institutional settings conducting educational programs for the community, for business and industry, and seminars for professional development.

http://www.lern.org/annual_convention/

[NYATEP 2007 Fall Workforce Conference "Expanding the Talent Pipeline"](#) **October 23—24, 2007** **Buffalo, NY**

<http://www.nyatep.org/i4a/pages/Index.cfm?pageID=4175>

Guidelines for Participating in Staff Development and Training

The WNY PDC is dedicated to facilitating opportunities for your professional development in the most successful environment possible. The following information and suggestions will help you navigate the next section of the newsletter, and will assure that you get the most out of the trainings you attend. Please keep this information, as it is applicable for the entire academic year.

Workshop descriptions:

A basic overview of the workshop, the facilitator, the date and site, fee and registration deadline is listed for each workshop. We often get questions about the registration deadline, which has a very important purpose. The decision to hold a class or not is made based on the number of participants registered by that deadline. If you've missed the deadline but are interested in the workshop, call us at 716-631-1236 and we can tell you if the class is a go, and if we are able to fit you in. Walk-ins are discouraged both because we do not provide extra materials for walk-ins, and because sites are chosen based on their capacity.

Guidelines for registering:

1. **Register early** to avoid disappointment! The majority of our workshops are filled to capacity. Although we make every effort to reschedule trainings to accommodate waiting lists, this is not always possible. Similarly, if something interests you, sign up when you see it – don't assume it will be offered again. Unfortunately, the expenses involved in bringing many of our opportunities to you precludes them being repeated.
2. Fill out the registration form **completely**. We want to be able to reach you in the event that a workshop needs to be rescheduled, there is a site change, or we need to get pre-class materials to you. Fill out your name on the registration form as you would like it to appear on your Certificate of Completion. Print clearly – if we can't read your name, it will undoubtedly be misspelled on the certificate.
3. Certificates will be issued to those who attend the entire workshop. Unfortunately, we are not able to give certificates to those who arrive late or leave early.
4. **No-shows will be billed** the full registration fee.
5. Further registrations from programs with outstanding balances will not be accepted.
6. There are no refunds for workshop fees, although paid reservations may be transferred.
7. Refreshments are a courtesy which we enjoy offering you when we are able. However, refreshments are not available at every workshop.

Attending a Workshop:

1. Be on time! If a workshop is scheduled to begin at 9:00 am, arrive at 8:45 to give yourself time to get a cup of coffee, sign in, and get settled. Workshops begin on time. We cannot accommodate latecomers – you will not be allowed to disrupt the class with your late arrival, and you will both miss the workshop and lose your registration fee.
2. Call the PDC Office at 716-631-1236 if you are unable to attend a workshop you've signed up for. Your spot can often be filled from our waiting list, and if so, your money will be refunded.
3. Dress in layers! Room temperatures in hotels and conference halls are difficult to regulate because one person's idea of warm is another person's idea of cold.
4. Avoid perfumes and colognes. This may sound silly, but several of our practitioners are dangerously allergic to these substances, and an overwhelming scent can jeopardize their respiration and force them to leave the room.

Staff Development and Training

Creating an ESL Learning Environment (an ESL Pre-Service, Part 1)

In our traditional ESL “pre-service” we will explore activities and practices conducive to ESL student learning. We’ll look at strategies for making academic tasks comprehensible such as embedding, graphic organizers, and cooperative activities. You’ll sample the use of short activities designed to help students learn particular aspects of the English language, and help student and teacher become comfortable with each other despite initial language barriers. You’ll learn how to adapt the activities for different ESL levels, and how to scaffold learning so that one activity and the lesson it teaches builds on the next. This is not the study of a specific curriculum, but rather strategies for successfully managing an ESL classroom. Your in-class assignment will be reviewed at “Part 2”, which will take place in the Spring.

Audience: ESL Educators
Date: Wednesday, September 19
12:30—3:30
Site: WNY PDC
Facilitator: Ann Marie Przybyl
Fee: None, but pre-registration is required
Deadline: September 14

Reading Instruction for Adults: 1st Step for Teachers

In a workshop based on her book “Reading Instruction ...” the author Susan McShane will spend the day with adult education teachers who want to build and strengthen adults’ reading skills. You will begin by learning background knowledge about reading and scientifically based reading instruction, but the focus of the day is in applying the research on modeling thinking, planning, and problem solving in the context of adult education settings. The goal of the day is to improve your ability to provide reading instruction for adults in family literacy and other basic education programs.

Audience: Reading Educators
Date: Friday, September 20
9:00 - 4:00
Site: WNY PDC
Facilitator: Susan McShane, National Institute for Literacy,
Fee: \$15.00 per person
Deadline: September 17

Distance Learning Program Managers Guide

Earlier this year, NYSED released the Distance Learning Program Managers Guide. It is designed to provide the information necessary to start and manage a DL program. In this web-based lecture, Kathy Sheehy of NYSED will review the Guide and some of its components including program design and requirements, the approval process, delivery modality, and reporting requirements.

Distance Learning Program Managers Guide (continued)

For: DL Program Administrators and staff
 Date: September 25, time to be determined
 Site: your computer
 Facilitator: Kathy Sheehy, NYSED
 Fee: None. When NYSED finalizes the time and connection information, we will forward it to all who have told us they are interested.

NRS Online Training

NRS Online is the training site for the National Reporting System for adult education (NRS). This site contains training courses designed for adult education program administrators that explain NRS requirements and courses designed to improve the quality of NRS data collection. You can also use this site as a reference source for the NRS. Courses include NRS Basic Information, Data Quality Courses, and Data Use.

As you proceed through an NRS Course you will encounter content along with a related question. By successfully answering a sequence of questions you will proceed to the end of the course. If your answer to a question is determined to be **correct**, you will automatically be forwarded to the next question or course page and a note will appear informing you as such. If your answer to a question is determined to be **incorrect**, you will be forwarded to a page that informs you that your answer was incorrect and gives you a short piece to read that conveys the answer. In order to advance to the next question you will need to correctly answer the current question. Your answers to the questions are stored in the database so that you can return to a course and review your work. **Keep in mind** that this site contains general NRS information. Questions specific to NY State procedures and policies should be asked of your RAEN Director.

To gain full credit for a course, you will need to complete all questions, print a copy of the course completion page, and forward it to the WNYPC to receive a Completion Certificate. You can find the NRS Online Training at <http://www.nrsonline.org/>

Crossroads Café

Crossroads Café is a video and workbook based program for teaching English as a second language (ESL). It is for only for students at NRS Level 4 or higher. This series helps students build English language skills and better understand U.S. culture by depicting the lives of six characters who are typical of many ESL learners. Included in this training are the requirements for NYSED approved programs to collect EPE for Crossroads Café delivery in both a traditional and distance-learning (packet program) setting.

Audience: Educators, practitioners, managers and administrators who currently include or hope to include Crossroads Café in their program.
 Date: Wednesday, Sept 26 9:00 am - 4:00 pm. Lunch is on your own.
 Site: Maryvale Community Ed Building, 777 Maryvale Drive
 Facilitator: Ann Marie Przybyl
 Fee: None, although pre-registration is required
 Deadline: September 24

Providing the Employer with Quality Employees **10 Techniques that will create a Successful Employee**

Most employers are looking for Likeability, Dependability and the ability to carry out tasks. Employers are always asking to “**send me someone who will show up on time, get along with others and I will teach them.**” Many of us have trained our customers in skills training but they have a problem showing up on time or don’t know how to fit in with the company.

This workshop explores in depth the causes and solutions to helping the employee to becoming a winner and successful in the workplace.

You will learn:

- What the real needs of the employer are.
- Why skills training alone will not create a successful placement.
- Why placing an emphasis on finding a job may not be in the best interest of the employee or the employer.
- Techniques to change the likeability factor of an employee.
- How the likeability factor fits into interviewing skills
- How to take the employee to a steady course of dependability.
- Why people stay on the job and how we can help.
- Seven techniques to teach your client how to advance in the job.
- How to use the seven techniques in working with an employee’s success plan.
- How to coach your client / customer to follow the plan.

This is a fast paced and fun seminar with lots of activity and techniques that will change your approach from job finding to successful career building.

Audience: Educators and Counselors in One Stop, Workforce Development, and Adult Ed
 Date: Wednesday, October 24
 9:00—4:00
 Site: Fairdale Banquet Hall, 672 Wehrle Drive
 Facilitator: Paul Clayton of Paul Clayton & Associates
 Fee: \$10.00 per person, includes continental breakfast and lunch
 Deadline: October 14

NYS Adult Learning Standards (Blue Box)

AERG is designed to raise the standards of adult education, and link learner’s goals to accomplishments in the world of work and in personal challenges. Standards of content and performance are linked to seven major achievement areas. Although no longer required by NYSED for new Adult Educators, the guidelines of the AERG will enrich your teaching, enhance the work of your students, and provide you with a blueprint for your curriculum. Participants will receive educational resources.

Audience: Educators and practitioners new to Adult Education
 Date: Thursday, September 27 . 9:30—12:30
 Site: WNY PDC
 Facilitator: Ann Marie Przybyl, WNY PDC Director
 Fee: None, although pre-registration is required
 Deadline: Sept 25

GED Examiner Training

This is the comprehensive training for GED Chief Examiners and Alternate Examiners at an official GED testing center. Contact your nearest testing center to find out the requirements for these positions or look at page 11 in the GED Examiners' Manual on the NYSED website. Chief Examiners and Alternate Chief Examiners are required to attend a State sponsored staff development training, provided by the GED Testing Office in Albany, at least once every year. If your CEs and ACEs have not attended this training within the year, NYSED will not issue you a site contract for 2008.

Proctors and Clerks are also invited to attend, but are not required to do so. Please be aware that teachers of ABE (Adult Basic Education) grade level 4.0 or higher, pre-GED preparation or GED preparation classes are not eligible for any positions. Job corps staff are not eligible to work in any capacity at any official GED testing site. Training packets will be distributed on the day of the training, but you are encouraged to read the GED Examiners Manual at the NYSED website: www.emsc.nysed.gov/workforce/ged.

Audience: See above
 Date: Thursday, October 11
 9:30—4:00
 Site: Erie 1 BOCES, 355 Harlem Road, WS
 Facilitator: NYSED GED Staff
 Fee: None, although pre-registration **with the WNYPDC** is required
 Deadline: October 3 or until filled to capacity

New Teacher of Adults (Pre Service for Adult Educators)

“The New Teacher of Adults” is the title of a wonderful handbook for Adult Educators written by Michael Brady and Allen Lampert. Join the authors for a full day exploring this resource. This session is designed for those new to Adult Education, and includes topics such as Basic Characteristics of Adult Learners, Planning a Class and Building a Syllabus, Your First Class, and Building a Safe and Successful Learning Environment. Participants will receive a copy of the book

Audience: Educators and practitioners new to Adult Education
 Date: Friday, September 28 . 9:00— 4:00
 Site: WNY PDC
 Facilitator: Allen Lampert
 Fee: \$10.00 per person
 Deadline: Sept 25

TABE Administrator Certification Update—Use of Validity Tables

NYSED requires the use of Validity Tables dated **July 1, 2007** in the Administration of the TABE. This training is based on the current NYSED Policy Guidelines for TABE, as well as updated information about the use and administration of the TABE. Participants will have an opportunity to practice using the validity tables, and NRS Levels information. NYSED policy requires that anyone administering the TABE complete this training.

Audience: New TABE Test Administrators and those who have not taken the Validity Table training.
 Date: Oct 2, 2007, 9:30 am - 12:30 pm., WNYPDC OR Oct 22, 9:30—12:30, CABO Olean
 Facilitator: Ann Marie Przybyl
 Fee: None, although pre-registration is required.
 Deadline: 5 business days prior to each training

Strategies for Experienced Educators

If you plan on attending the Sept 21st workshop “The New Teacher of Adults”, consider this your “Part 2”. If you are an experienced Adult Educator looking for new ideas and a shot of enthusiasm, you will love the strategies you explore in this training. Some of the areas to be covered include Working with At Risk Students, Group Discussion and Peer Learning techniques, Co-Teaching Strategies, and Tools for Teachers.

Participants will receive a copy of the book.

Audience: Educators and practitioners with at least one year experience teaching adults
OR those who completed the September 28th training.
Date: Friday, October 12 . 9:00— 4:00
Site: WNY PDC
Facilitator: Allen Lampert
Fee: \$10.00 per person
Deadline: Sept 25

GRASP (Giving Ready Adults a Study Program)

This GRASP training is for new teachers; not experienced GRASP teachers. Recertification training for experienced GRASP teachers and their administrators will be offered in the spring.

Topics to be included in the training are as follows:

- Ø Overview and Introduction to GRASP
- Ø Program Design and Requirements
- Ø Choosing Materials
- Ø Required Recordkeeping / EPE
- Ø Assessment
- Ø Motivation and Retention
- Ø Marketing / Networking

.Audience: Educators and practitioners new to GRASP
Date: Friday, October 19 9:00—3:00
Site: WNY PDC
Facilitator: June White and Karen Kane, NYSED certified GRASP trainers
Fee: None, although pre-registration is required
Deadline: Oct 15

Customized GED Lesson Plans for Your Students

The majority of adult education instructors teach on a part-time basis, often without any compensated or regularly scheduled planning time. Many of these teachers provide instruction in content areas which are beyond their personal areas of expertise and experience. As a result, many teachers need resources for the adult education classroom that will enable them to conduct lessons that are pedagogically sound and that include research-based strategies that have been proven to enhance student performance and outcomes.

In this workshop, teachers will become familiar with a series of lesson plans that they can implement in the classroom to address specific areas that present challenges to their students

Customized GED Lesson Plans (continued)

Audience: GED Teachers
 Date and Site: Friday, Oct 5, Holiday Inn Grand Island, 9:00—3:00
 Facilitators: Susan Pittman-Shetler and Bonnie Vondracek of E-Learning Connections
 Fee: \$15.00 per person
 Deadline: September 25 or until filled to capacity

Recognizing and Reporting Child Abuse Certification

The Medical Society of the State of New York is accredited by the Accreditation Council for Continuing Medical Education (ACCME) to sponsor continuing medical education, and is one of several agencies approved by NYSED to offer this course online. After completing this approximately 2 hour course you will have an understanding of what you, as an Educator/Practitioner, need to know about recognizing and reporting child abuse, maltreatment, and neglect. The on line course is well-designed and the website is easy to navigate.

To participate, go to <http://www.medcomrn.com/mssny/> and click on course # MSSNY0102. Follow the instructions. You will be asked to submit a credit card # for the course fee of \$ 29.00.

NYATEP Workforce Investment Act Regional Meeting

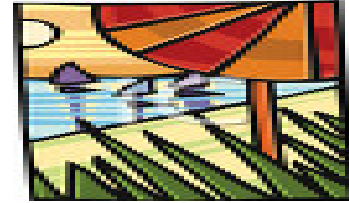
This workshop is a follow up to the NYATEP meeting held in April 2007 in Batavia (although you did not have to attend that one to attend this one). In response to suggestions made at the April meeting, as well as following the plan of work for this NYSED project, this full day facilitated meeting is designed to further identify ways and means to integrate adult literacy services within the Western NY workforce development system. Join WIA partners and the adult literacy providers to brainstorm ways to increase collaboration and address collectively local workforce and education issues and concerns.

Audience: Adult literacy providers and Workforce Investment Act partners
 Date: November 8, 2007, 9:00—3:30
 Site: Holiday Inn Airport, Genesee Street
 Facilitator: NYATEP
 Fee: None, although pre-registration is required. Continental breakfast and lunch provided.
 Registration Deadline: Nov

Addictive Thinking

Oftentimes, adult ed students come to your classroom with a variety of life experiences and personal challenges. This training will present evidence of unusual and self-defeating logic of the addictive thinking and how to use this evidence to help people understand and recover from various addictions. The trainees will learn what addictive thinking is, examine its origins and explore the importance of such thinking as conflict, guilt, shame, anger, managing feelings, defense mechanisms, spirituality and co-dependence

Audience: Educators, counselors, practitioners
 Date: Friday, November 16, .9:30—12:30
 Site: Erie 1 BOCES, 355 Harlem Rd, West Seneca
 Facilitator: Chautauqua Alcoholism and Substance Abuse Council
 Fee: None, although you must pre-register
 Deadline: Nov 3



Annual GED Day Camp—you've graduated to Waterfront Camp!

No, we're not really going to camp, building bonfires, or sailing—but we're using this clever theme to design a program rich in resources. Spend a day in a truly creative environment while you explore exciting, innovative strategies for preparing your students for the GED exam. Hear the latest from NYSED and the GED Testing Service, and meet print and software publishers. Lots of door prizes and resources will accompany each session. **Remember to indicate your workshop choices when pre-registering!** Walk-ins will not be allowed.

Dress for camp—t-shirts and hiking boots are fine!

8:30 – 9:00 Registration, Continental Breakfast

12:15 Lunch

Breaks and Vendors throughout the day

9:00—10:00 Keynote Address : Get Ready for 2011!

On January 1, 2011, the GED® Testing Service will launch a new series of the GED® Tests. Bonnie and Sue, National Trainers for the implementation of the GED 2002 Series Tests by the USDOE and the GED Testing Service and WNY favorites, are back with their annual GED update. This keynote address will provide information about some of the changes that will take effect with the implementation of the 2011 Series GED® Tests and what programs can do to prepare for the new tests. While 2011 may appear to be well into the future, this session will focus on how programs can begin to make changes that will have a positive impact on student outcomes now and into the future.

Morning Workshops (10:15—12:15)

Geometry – It's Not All Theorems and Proofs!

In 2005, the GED® Testing Service reviewed mathematics test results from candidates across the country and found that students consistently experience difficulty with geometry. If students are going to improve their math skills, they have to learn the basics of geometry and teachers need to incorporate more hands-on learning activities in the adult education classroom. This session will focus on activities teachers can use to improve students' understanding and application of geometry for the GED® Mathematics Test and in real life. Facilitators: Susan Pittman-Shetler and Bonnie Vondracek of E-Learning Connections

Teaching GED Essay Writing – Guaranteed Success (you must take both 10:15—12:15 and 1:15—3:15).

This workshop promises to introduce you to a “no-fail” GED Essay Writing format and classroom strategies which have been particularly successful with the “reluctant learner”. Facilitators: Michele Kasperek and Andrea Schneider

Calculator Confidence The GED Mathematics Test requires the use of a scientific calculator. Do you have the knowledge and the confidence to help your students master this very important tool to be successful? Participants will receive a resource book as part of this workshop. Facilitator: Judy Reagan

Accommodations for GED Test Takers

Kimberly Malcolm and Claudia Dean of NYSED will review the "Request for Testing Accommodation" forms. You'll hear how to complete them, how to determine which students are eligible for accommodations, and the difference between accommodations which require the form and those which do not. Time is included for questions, answers, and networking

Annual GED Day Camp—continued**Morning Workshops — continued (10:15—12:15)**

Accessing Contextualized Language and Literacy Through Film Every teacher strives to connect with and motivate their GED students. In this workshop, you will see how studying movies in your classroom helps your student connect with the language and literacy processes that supports a higher success rate on the GED Language Arts section. Facilitator: Marilyn Rymniak of the LAC

Afternoon Workshops - (1:15—3:15)

Teaching GED Essay Writing – Guaranteed Success Continued (you must take both 10:15—12:15 and 1:15—3:15). This workshop promises to introduce you to a “no-fail” GED Essay Writing format and classroom strategies which have been particularly successful with the “reluctant learner”. Facilitators: Michele Kasperek and Andrea Schneider

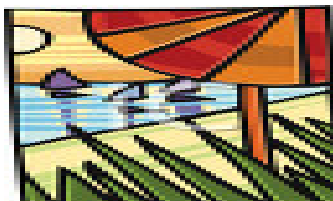
Maximize GED Outcomes Using NRS Strategies It is critical that GED Educators and Administrators thoroughly understand NRS strategies as they relate to the GED as an outcome measure. Program design, assessment timeline, application do’s and don’ts, and recording and reporting of data will all be discussed in an effort to maximize results. Facilitator: Rosemary Matt, LAC

Generational Differences in the Classroom (A GED Classroom is diverse in so many ways, and one of them is age - students can be anywhere from 16 to 60 years old. In this session, you will hear about the different ways that different generations learn, what values guide them to be successful, and strategies for facilitating all ages to prepare for the GED together successfully
Facilitator: The SOLiance Group

Algebra – It’s Not Rocket Science!

Algebra is an area in mathematics with which adult learners struggle. In fact, many adult learners think they can never master even the very basics of algebra. This session is designed to provide teachers with activities and resources they can use to introduce students to algebraic thinking. During this session, teachers will learn how to make algebra fun and less threatening for adult learners while providing students with the skills they need to be successful on the GED® Mathematics Test Facilitators: Susan Pittman-Shetler and Bonnie Vondracek of E-Learning Connections

Audience:	GED Teachers and Administrators
Date:	Thursday, October 4 8:30 am — 3:30 pm
Site:	Holiday Inn Grand Island
Cost:	\$15.00 per person includes continental breakfast, lunch, and workshop materials
Registration Deadline:	September 21



WNY Professional Development Consortium
Workshop Registration Form

777 Maryvale Drive, Room 145
Cheektowaga, NY 14225

Phone #: (716) 631-1236

Fax #: (716) 631-0657

PLEASE PRINT

*WORKSHOP:

*DATE OF WORKSHOP:

*WORKSHOP SITE/TIME:

*YOUR NAME: _____

(print your name as you would like it to appear on your participation certificate. Certificates will be issued to those who attend the entire workshop)

YOUR JOB:

*YOUR AGENCY:

*WORK ADDRESS:

(street)

(city)

* *(zipcode)*

*E-MAIL ADDRESS:

*HOME ADDRESS (Optional):

(street)

(city)

* *(zipcode)*

*PHONE + EXT.(DAY):

*EVENING (HOME):

*FAX:

ADDRESSES with ZIP CODES AND PHONE NUMBERS with AREA CODES ARE IMPORTANT

- CHECK ENCLOSED (WORKSHOP FEE):
- BILL MY AGENCY
- PURCHASE ORDER WILL BE FORWARDED

PLEASE SEND ME A MAP TO THE TRAINING SITE

COMPLETE THIS FORM AND RETURN IT WITH YOUR CHECK OR MONEY ORDER PAYABLE TO:

LITERACY NEW YORK

777 Maryvale Drive, Room 145, Cheektowaga, NY 14225. Questions? Call Nicole Sylvester at: (716) 631-1236. There are no refunds for workshop fees, although paid reservations may be transferred.

◆ **Note: No-shows will be billed the full registration fee.**

◆ *Further registrations from programs with outstanding balances will not be accepted.*

**PLEASE USE ONE FORM AND A SEPARATE CHECK FOR EACH PROGRAM
YOU WISH TO ATTEND.
MAKE COPIES AS NEEDED.**

No confirmation will be sent. * You will hear from us: *

- 1) if the workshop is filled to capacity and we are placing you on a waiting list
- 2) if you need more information than is listed in the course description
- 3) if the workshop is canceled or needs to be rescheduled

WNY Professional Development Consortium
(West RAEN)



**WNY Professional
Development Consortium
(WEST RAEN)**

777 Maryvale Drive, Room 145
Cheektowaga, NY 14225

Phone: 716 631 1236

Fax: 716 631 0657

Email: amprzybyl@aol.com
NSylvester@aol.com

Ann Marie Przybyl, Director

*Nicole Sylvester,
Administrative Assistant*

**Find us on the web
at www.wnypdc.org**

