

INFO & OPPORTUNITIES

VOLUME 5 ISSUE 1

SEPTEMBER 2009

House Committee Boosts Adult Ed Funding for FY 2010

President Obama's [FY 2010 budget](#) proposes *Adult Education and Family Literacy Act (AEFLA)* state grants of [\\$628.2 million](#), an increase of \$74.1 million over last year's levels. The FY 2010 state grant funding includes restoration payments for states that were underpaid allotments due to an administrative error in state grants awarded from 2003 to 2008. States that were unintentionally overpaid will be held harmless. The budget increases to \$75 million the amount reserved to help states and communities provide limited English proficient adults with expanded access to high-quality English literacy programs linked to civics education. That figure is \$7.1 million more than in FY 2009. The new budget also proposes \$13.4 million for OVAE's national leadership activities. The administration is committed to literacy, and has determined that National Institute for Literacy (NIFL) funds can be spent in a more coordinated and efficient manner through OVAE, while eliminating additional costs of NIFL's administration. Funding supporting the National Institute for Literacy (NIFL) would be [shifted to the Department](#) in order to create a critical mass of resources for adult education research and training. The president also has made early childhood education a priority through his Zero to Five initiative and made funding available through the American Recovery and Reinvestment Act. The [Even Start program, currently at \\$66 million, would receive no funds](#). Grants to states for workplace and community transition training for incarcerated individuals would be level-funded at \$17.2 million. About half of the savings for next fiscal year are from defense programs, and about half are from non-defense programs.

BEST Plus Reminder

In August Program Managers received a list of currently certified BEST Plus Administrators, which included required dates for BEST Plus Refreshers. Please remember that NYSED will not tolerate Assessments being conducted by anyone who is not currently certified. BEST Plus and BEST Refresher training is scheduled this Fall. Be sure to review the list again and sign up any staff who is in need of training. Contact Ann Marie Przybyl at amprzybyl@gmail.com if you would like the list resent to you.

STAFF DEVELOPMENT & TRAINING

Sept 22: BEST Plus

Sept 23: TABE Administrator's Certification

Sept 24: BEST Plus Refresher

Sept 29: Skills Tutor

Sept 30 : BEST Literacy

Oct 6 : GED Day Camp

Oct 7 : Graphic Literacy

Oct 13 OR Oct 15: ASISTS Class Coding Webinar

Oct 14: TABE Administrator's Certification

Oct 20: Program Manager Roundtable

Oct 30: NRS Advanced

Nov 4: BEST Plus Refresher

Nov 6: Crossroads Cafe

Nov 10: Pre-GED and GED Connection

Nov 11: Safety and Security At Instructional Sites

Nov 12: GED Examiner

Recession Sees Surge in GED Test Taking

A recent [report](#) from the GED Testing Service's (GEDTS) reveals that 2008 registered both the highest number of test-takers and the highest passing rate since the new GED series was introduced in 2002. Even more encouraging than the 6.6 percent surge in the number of adults who took the GED tests that year was an increase in the passing rate to 73 percent program wide. Delaware, Iowa, Kansas, and the U.S. military's Defense Activity for Non-Traditional Education Support (DANTES) program achieved passing rates above 90 percent, according to GEDTS. The report also notes that test-taking in the last quarter of 2008, at the beginning of the economic downturn, increased 7 percent over the same period in 2007. You can download the report at:

http://www.acenet.edu/Content/NavigationMenu/ged/pubs/GED_ASR_2008.pdf

Disability History Week Celebration "I Am a Person"

October 23rd, 2009 from 9:30am - 2:30pm
Richard Winters Hall, Canisius College

The all day event is free and will feature workshops on how you can get involved in getting Disability history taught in schools, how to support Citizenship education for those with disabilities, a Poetry Jam, and a Disability History film workshop. Information tables with resources for teaching disability awareness, panel presentations, and discussions with local disability leaders will also take place. For more information please call Rich Marino, 716-517-3598.

News About TABE 7/8

Programs using the TABE 7/8 will have until June 30, 2010 to transition to the TABE 9/10. The publisher, CTB McGraw Hill, has discontinued printing the 7/8 and expects that the supply of answer sheets will be exhausted by the end of this program year. In addition, the TABE 7/8 was not submitted for consideration for placement on the U.S. Department of Education's list of approved assessments for adult education.

Reading on the Radio

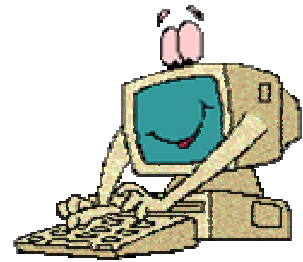
The Niagara Frontier Radio Reading Service invites volunteer readers to record current books and magazines or to do live readings, all of which are broadcast to vision-impaired listeners. Participants select interesting materials to read from a choice of many options, and bring them to life. Volunteers are asked to read one or more hours per week, weekdays or weekends, days or evenings at the NFRRS studio, 1199 Harlem Road near Clinton St. Cheektowaga.

If you are interested in sharing your love of reading with others, contact Bob Sikorski, 821-5555.

Resource Server

Tutorial Videos for the Classroom

Over 65 short videos for Adult Ed classrooms including ESL/ESOL, basic literacy, reading, writing, numeracy, adult secondary ed, family literacy, and integrating technology can be found at the Media Library of Teaching Skills for Adult Learning and Literacy. You can also find videos of teachers discussing these classroom videos, as well as suggested questions used for the discussions.



<http://mlots.org>

New Classroom Lesson Plan Explores Historic Federal Buildings

Three historic federal buildings come alive in an interactive lesson plan, created cooperatively by the National Park Service (NPS) Teaching with Historic Places program and the U.S. General Services Administration (GSA), Public Buildings Service, in partnership with the National Conference of State Historic Preservation Officers.

“Bricks and mortar can be windows into the past,” said Dan Wenk, Acting Director of the National Park Service. “I hope that teachers ... will take advantage of this lesson plan exploring the connections between public buildings and the people they serve and utilize information available about the National Register of Historic Places.”

The lesson plan includes information about the design and construction of the 1875 Pioneer Courthouse in Portland, Oregon; the 1916 Byron R. White U.S. Courthouse in Denver, Colorado; and the 1932 Gene Snyder U.S. Courthouse and Custom House in Louisville, Kentucky. It also contains histories, photographs, a map, learning activities, and a Supplementary Resources section.

<http://www.nps.gov/history/nr/twhp> or www.gsa.gov/historicpreservation,

A Report: "Literacy of Foreign-Born Adults in the United States: 2003."

Drawing on data from the 2003 National Assessment of Adult Literacy (NAAL) to explore the English literacy of foreign-born adults living in households in the United States, this brief presents the English literacy scores of foreign-born adults age 16 and older by race/ethnicity, age of arrival in the United States, years spent in the United States, highest level of educational attainment, and language spoken before starting school. Scores are reported on three literacy scales: prose, document, and quantitative. Findings indicate that

To view, download and print the report as a PDF file, please visit:
<http://nces.ed.gov/pubsearch/pubsinfo.asp?pubid=2009034>

Conferences

Massachusetts Coalition for Adult Education Annual Conference
October 21—22, 2009, Marlborough, MA.

This annual conference features a variety of workshops reflecting current trends and practices in Adult Education.

<http://www.mcae.net/>



National Council of Teachers of Mathematics (NCTM), 2009 Regional Conference & Exposition

October 21-23, 2009, Boston MA

- Experience a wide variety of sessions and in-depth gallery workshops
- Gain new ideas for teaching or research
- Network and make new contacts

Contact: NCTM, 888-747-8704, <http://www.nctm.org/conferences/content.aspx?id=18223>

[Helping Adults Succeed in Postsecondary Education and Training](#)

November 16-17, 2009

National College Transitions Network, Conference 2009, Providence, RI
The National College Transition Network at World Education, in partnership with the Nellie Mae Education Foundation, is hosting the third annual national conference on Effective Transitions in Adult Education.

The Effective Transitions Conference is for adult and postsecondary educators and administrators. Workshop topics include:

- Promising practices for career pathways and ESOL/ESL programs
- Preparing students for college-level reading, writing, and math
- Building student self-efficacy
- And more

<http://www.collegetransition.org/conference09.html>

Guidelines for Participating in Staff Development and Training

The WNY PDC is dedicated to facilitating opportunities for your professional development in the most successful environment possible. The following information and suggestions will help you navigate the next section of the newsletter, and will assure that you get the most out of the trainings you attend. Please keep this information, as it is applicable for the entire academic year.

Workshop descriptions:

A basic overview of the workshop, the facilitator, the date and site, fee and registration deadline is listed for each workshop. We often get questions about the registration deadline, which has a very important purpose. The decision to hold a class or not is made based on the number of participants registered by that deadline. If you've missed the deadline but are interested in the workshop, call us at 716-631-1236 and we can tell you if the class is a go, and if we are able to fit you in. Walk-ins are not allowed unless specifically stated both because we do not provide extra materials for walk-ins, and because sites are chosen based on their capacity.

Guidelines for registering:

1. **Register early** to avoid disappointment! The majority of our workshops are filled to capacity. Although we make every effort to reschedule trainings to accommodate waiting lists, this is not always possible. Similarly, if something interests you, sign up when you see it – don't assume it will be offered again. Unfortunately, the expenses involved in bringing many of our opportunities to you precludes them being repeated.
2. Fill out the registration form **completely**. We want to be able to reach you in the event that a workshop needs to be rescheduled, there is a site change, or we need to get pre-class materials to you. Fill out your name on the registration form as you would like it to appear on your Certificate of Completion. Print clearly – if we can't read your name, it will undoubtedly be misspelled on the certificate.
3. Certificates will be issued to those who attend the entire workshop. Unfortunately, we are not able to give certificates to those who arrive late or leave early.
4. **No-shows will be billed** the full registration fee.
5. Further registrations from programs with outstanding balances will not be accepted.
6. There are no refunds for workshop fees, although paid reservations may be transferred.
7. Refreshments are a courtesy which we enjoy offering you when we are able. However, refreshments are not available at every workshop.

Attending a Workshop:

1. Be on time! If a workshop is scheduled to begin at 9:00 am, arrive at 8:45 to give yourself time to get a cup of coffee, sign in, and get settled. Workshops begin on time. We cannot accommodate latecomers – you will not be allowed to disrupt the class with your late arrival, and you will both miss the workshop and lose your registration fee.
2. Call the PDC Office at 716-631-1236 if you are unable to attend a workshop you've signed up for. Your spot can often be filled from our waiting list, and if so, your money will be refunded.
3. Dress in layers! Room temperatures in hotels and conference halls are difficult to regulate because one person's idea of warm is another person's idea of cold.
4. Avoid perfumes and colognes. This may sound silly, but several of our practitioners are dangerously allergic to these substances, and an overwhelming scent can jeopardize their respiration and force them to leave the room.

Staff Development and Training

Program Manager's Roundtable

Program Manager's Roundtables are a chance for discussion with your colleagues around topics which you choose. We will update you on any new information from NYSED, bring new resources to your attention, and provide you with an opportunity for questions and answers. The PM Roundtable serves as a forum for discussions on current practices, research to develop improved approaches and methodologies leading to the more successful program outcomes, and networking opportunities. We encourage you to send us suggestions on what information or topics you would find helpful to address at the Program Managers Roundtable.

Audience: Program Managers and Literacy Coordinators
 Date: Tuesday, November 20, 2009
 Time: 12:00– 2:00 pm. Lunch will be provided

BEST Plus Refresher

The BEST Plus Refresher is for experienced BEST Plus Test Administrators. In order to participate, you must have previously been certified and currently practicing as a BEST Plus Test Administrator. Participants will have the opportunity to receive comprehensive scoring review and practice, watch a training video, and discuss BEST Plus Test experiences. Participants are asked to bring their BEST Plus Test Administrators Training Manual and their BEST Plus Scoring Rubric for reference during this workshop.

NYSED requires that all active BEST Plus Test Administrators complete BEST Plus Refresher training annually. Interested program managers are welcome to attend.

Audience: BEST Plus Test Administrators in need of annual certification renewal
 Date: Thursday, September 24, 9—12:00 OR Wed Nov 4 2009, 1:00 pm - 4:00 pm
 Site: Maryvale Community Education building, 777 Maryvale Dr. 14225
 Facilitator: CAL certified trainers
 Fee: None, although pre-registration is required
 Deadline: September 23, OR Nov 2, 2009

TABE Certification Training

NYSED requires the use of Validity Tables dated July 1, 2007 in the Administration of the TABE. This training is based on the current NYSED Policy Guidelines for TABE, as well as updated information about the use and administration of the TABE. Participants will have an opportunity to practice using the validity tables. NYSED policy requires that anyone administering the TABE complete this training. Students who are TABE'd by someone who has not completed this training within the last 2 years will be disallowed for EPE and NRS purposes.

Audience: Educators and practitioners who administer the TABE
 Date: Wednesday, Sept 23, 9:00—12:00 pm OR Wed Oct 14 1:00—4:00
 Site: Maryvale Community Education Bldg, 777 Maryvale Dr, Cheektowaga
 Facilitator: Ann Marie Przybyl
 Fee: None, although pre registration is required
 Deadline: September 22, OR Oct 9, 2009.

GED Examiner Training

This is the comprehensive training for GED Chief Examiners and Alternate Examiners at an official GED testing center. Contact your nearest testing center to find out the requirements for these positions or look at page 11 in the GED Examiners' Manual on the NYSED website. Chief Examiners and Alternates are required to attend a State sponsored staff development training, provided by the GED testing office in Albany, at least once every year. If your CEs and ACEs have not attended this training within the year, NYSED will not issue you a site contract for the following year.

Training packets will be distributed on the day of the training, but you are encouraged to read the Manual at the NYSED website prior to attending.

Audience: GED Chief and Alternate Examiners
 Date: Thursday Nov 12, 9:00—4:00
 Site: Erie Community College, North Campus
 Room E100
 6205 Main Street
 Williamsville, New York 14221

Facilitator: NYSED GED Staff
 Fee: None. Continental breakfast and lunch will be provided
 Deadline: Nov 1, 2009. You MUST pre register for this training at the WNYPCDC website, www.wnypdc.org. Walk ins and latecomers will not be allowed to participate.

NRS Advanced Training

Using the National Reporting System (NRS) Data for Program Improvement is the focus of this training. Come see how your data becomes a catalyst for program improvement. This workshop concentrates on using NRS data for program management, change, and improvement.

Core features include:

- using data for accountability, program promotion and program management
- the US Department of Education's data use model for program improvement
- NYSED policy and how it shapes program practice
- in-depth analysis of statewide targets vs. program data

Participants will receive a copy of the NYSED Adult Literacy Compliance Self-Review Form and will explore in depth the ASISTS features for comparative analysis of program data vs. NYSED targets. Therefore, we strongly recommended that at least one staff person from any WIA Title II funded program attend this session.

Audience:
 Date: Thursday Nov 12, 9:00—4:00
 Site: Erie Community College, North Campus
 Room E100
 6205 Main Street
 Williamsville, New York 14221

Facilitator: NYSED GED Staff
 Fee: None. Continental breakfast and lunch will be provided
 Deadline: Nov 1, 2009. You MUST pre register for this training at the WNYPCDC website www.wnypdc.org. Walk ins and latecomers will not be allowed to participate.

Skills Tutor

Goal of Training – Participants will be able to implement the SkillsTutor software to assist their students in meeting the objectives of the academic curriculum for Adult Basic Education (reading level 4-8) and GED (reading level 9-12). Teachers will be able to: Login to both student and teacher sites, create classes based on students' needs, develop assignments to address student weaknesses, run reports, analyze reports, and modify assignments to further meet their students' needs and understand the appropriate documentation for EPE requirements

Audience: ONLY those who have been ore-approved by NYSED
 Date: Tuesday Sept 29, 9:00—12:00
 Site: Holiday Inn, Batavia
 Facilitator: Kevin Roth, Houhgton Mifflin
 Fee: None. Continental breakfast will be provided
 Deadline: When filled to capacity of 24.

BEST Literacy

BEST Literacy is a competency-based assessment that uses a variety of functional literacy tasks to measure English language learner's ability to read and write. Beginning July 1, 2008, NYS agencies had the option of using this test to additionally assess students with specific BEST Plus scores. In this workshop you will learn what the BEST Literacy Test is, how to administer and score it, and how to interpret those scores in relation to NRS levels and instructional design. Student work will be used to practice both use of the writing rubric for scoring, and obtaining a final score using a specific formula.

Audience: Appropriate Assessment staff and interested program administrators
 Date: September 30, 1:00—4:00
 Site: Maryvale Community Ed Building, 777 Maryvale Dr, Cheektowaga
 Facilitator: Ann Marie Przybyl
 Fee: None, although pre registration is required
 Deadline: September 29

GED Connection and Pre-GED Connection

PBS LiteracyLink's GED Connection is a stand-alone multimedia learning system that helps adult learners advance toward their GED and improve skills needed at the workplace. Combining video programs, print, and online computer technology, GED Connection helps learners develop strategies and practice for success on the GED exam and beyond. Used in the classroom or in a Distance Learning Model, the integrated multimedia components work together to make studying for the GED easy for a busy adult who needs to work at his or her own pace. Included in this training are the requirements for NYSED approved programs to collect EPE for GED Connection delivery.

Audience: Appropriate teachers and interested program administrators
 Date: November 10, 9:00—4:00
 Site: Maryvale Community Ed Building, 777 Maryvale Dr, Cheektowaga
 Facilitator: Ann Marie Przybyl
 Fee: None, although pre registration is required
 Deadline: November 2

GED Day Camp

The theme of our Annual GED Conference is “transition”. The Keynote address will focus on an introduction to the newest version of the exam, schedule for 2012. Workshops topics include Updates from Albany, NRS Strategies for GED Outcomes, Reading Basics for GED Prep, GED Mathematics, Engaging Reluctant Writers, Memory Tricks and Test Taking Strategies, TABE Online, Content Area Lesson Structure, GED Beyond the Basics, “Your Life, Your Money”, and Motivating Yourself and Your Student with Brain-Based Activities.

Audience: GED and Pre– GED teachers and program administrators
 Date: October 6, 8:00—4:00
 Site: Ramada Inn and Conference Center, Getzville
 Fee: \$15.00 per person. To register, contact the WNYPDC for a registration form.
 Deadline: October 1, or until sessions are full

BEST Plus

The BEST Plus is an individually administered face-to-face oral interview designed to assess the English language proficiency of adult English language learners. This workshop prepares participants to administer and score the test by providing an overview of the development and purpose of the test, opportunities to practice delivery and scoring, and clarification of administration and scoring issues. Participants will recognize the importance of assessing oral language proficiency and be able to administer and score the test and interpret BEST Plus scores

Audience: Educators and practitioners who will be administering the BEST Plus
 Date: Tuesday, September 22, 9:00 am - 3:00 pm Lunch is on your own
 Site: Maryvale Community Education Building, 777 Maryvale Dr. 14225
 Facilitator: CAL certified trainers
 Fee: \$5.00 per person
 Deadline: September 21, 2009

ASISTS Class Coding Webinar

Mark your calendar for October 13 in the morning OR October 15 on the afternoon and join Rosemary Matt, NRS Liaison for NYS, for a webinar about coding both traditional and Distance Learning classes in ASISTS. As soon as we have complete information, we will email to program and data Managers of EPE funded programs.

Crossroads Café

Crossroads Café is a video-based program for teaching English as a second language (ESL). This series helps students build English language skills and better understand U.S. culture by depicting the lives of six characters who are typical of many ESL/ESOL learners.

Audience: Distance and classroom teachers and interested program managers
 Date: Nov 6, 9:00—4:00
 Site: Maryvale Community Education Building
 Fee: None, although pre-registration is required.
 Deadline: Nov 5

GED Day Camp Day 2 - Graphic Literacy

Graphic literacy is the ability to read and understand visual messages. Graphic literacy requires that students be able to find main ideas and supporting details as well as make inferences and draw conclusions. These are all reading skills. However, in our classrooms we generally focus these reading skills on literature or informational text.

We live in a highly visual world, and now more than ever, our students need to be able to interpret the visual messages that surround them. This full-day workshop will provide participants with information on how to help their students enhance their graphic literacy skills for the GED Tests and real-life situations at home and in the workplace. Participants will receive a variety of resource materials and sample activities they can take back and use in their programs.

Audience: ABE and GED Teachers and Practitioners
Date: Wednesday, October 7 9:00 - 4:00 pm
Site: Ramada inn and Conference Center
2402 North Forest Rd., Amherst
Facilitator: Bonnie Goonan and Susan Pittman-Shetler ,E-Learning Connections
Fee: \$5.00 per person
Deadline: Sept 30, 2009

Safety and Security at Instructional Sites

Given all the attention paid to homeland security and the prevention of terrorism today, the chances of your becoming a victim of terrorism are probably less than your odds of winning the lottery. It's more likely that you might encounter an act of violence at work. You could be harmed by a disgruntled consumer, assaulted by a co-worker, injured while witnessing an act of domestic violence at your instructional site or be at the receiving end of domestic violence yourself.

Recognizing that you have the power to increase your awareness and understanding of potential safety and security situations at work; and the steps you can take to better ensure your own safety and well-being, are at the heart of this program. We will examine how you can become more safety-savvy.

Practical tips from safety and security experts on how to minimize one's exposure to security risks and how best to react if confronted with a hostile situation will be discussed.

Participants will develop an emergency response plan to present to Program Administrators and key staff members.

Audience: Program Managers ,Teachers, and Practitioners
Date: Wednesday, November 11 9:30 - 12:30 pm
Site: Maryvale Community Education Bldg
777 Maryvale Drive, Cheektowaga
Facilitator: Tanya Lipinski, Director, East RAEN
Fee: \$5.00 per person
Deadline: November 2, 2009

WNY Professional Development Consortium
Workshop Registration Form

777 Maryvale Drive, Room 145
Cheektowaga, NY 14225

Phone #: (716) 631-1236

Fax #: (716) 631-0657

PLEASE PRINT

*WORKSHOP:

*DATE OF WORKSHOP:

*WORKSHOP SITE/TIME:

*YOUR NAME: _____

(print your name as you would like it to appear on your participation certificate. Certificates will be issued to those who attend the entire workshop)

YOUR JOB:

*YOUR AGENCY:

*WORK ADDRESS:

(street)

(city)

* *(zipcode)*

*E-MAIL ADDRESS:

*HOME ADDRESS (Optional):

(street)

(city)

* *(zipcode)*

*PHONE + EXT.(DAY):

*EVENING (HOME):

*FAX:

ADDRESSES with ZIP CODES AND PHONE NUMBERS with AREA CODES ARE IMPORTANT

- CHECK ENCLOSED (WORKSHOP FEE):
- BILL MY AGENCY
- PURCHASE ORDER WILL BE FORWARDED

PLEASE SEND ME A MAP TO THE TRAINING SITE

COMPLETE THIS FORM AND RETURN IT WITH YOUR CHECK OR MONEY ORDER PAYABLE TO:

LITERACY NEW YORK

777 Maryvale Drive, Room 145, Cheektowaga, NY 14225. Questions? Call Nicole Sylvester at: (716) 631-1236. There are no refunds for workshop fees, although paid reservations may be transferred.

◆ **Note: No-shows will be billed the full registration fee.**

◆ *Further registrations from programs with outstanding balances will not be accepted.*

PLEASE USE ONE FORM AND A SEPARATE CHECK FOR EACH PROGRAM
YOU WISH TO ATTEND.
MAKE COPIES AS NEEDED.

No confirmation will be sent. * You will hear from us: *

- 1) if the workshop is filled to capacity and we are placing you on a waiting list
- 2) if you need more information than is listed in the course description
- 3) if the workshop is canceled or needs to be rescheduled

WNY Professional Development Consortium
(West RAEN)



**WNY Professional
Development Consortium**

777 Maryvale Drive, Room 145
Cheektowaga, NY 14225
(WEST RAEN)

Phone: 716 631 1236

Fax: 716 631 0657

Email: amprzybyl@gmail.com

wahickman8@aol.com

Ann Marie Przybyl, Director
WendyHickman, Assistant

**Find us on the web
at www.wnypdc.org**



Don't forget to
Register for

GED Day Camp
Oct 6 and 7